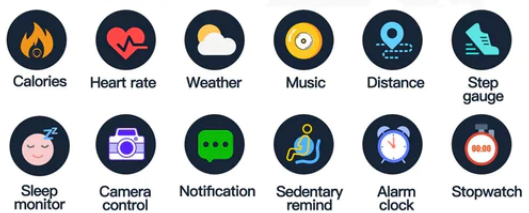


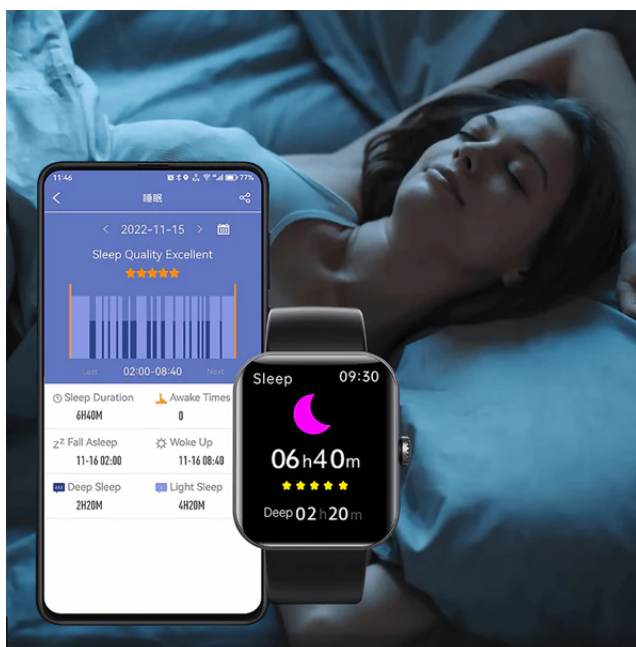
 **FREE Shipping On All U.S. Orders** 







Professional Real-time heart rate detection





1/7











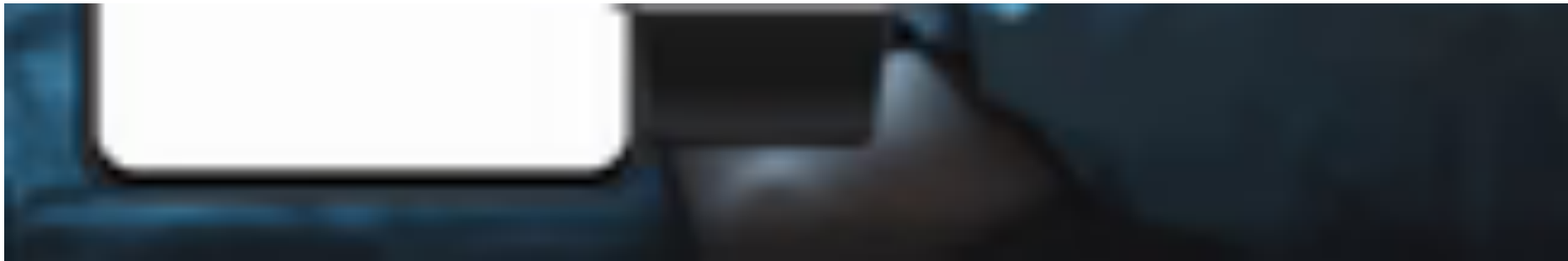


Professional Real-time heart rate detection











★★★★☆ 26 Reviews

Non-Invasive Glucose Monitoring Smartwatch

~~\$99.99 USD~~ **\$49.95 USD** Sale

Color - pick your favorite

Rose Quartz

Cosmic Black

Quantity

— 1 +

[ADD TO CART →](#)

Safe & Secure Checkout With



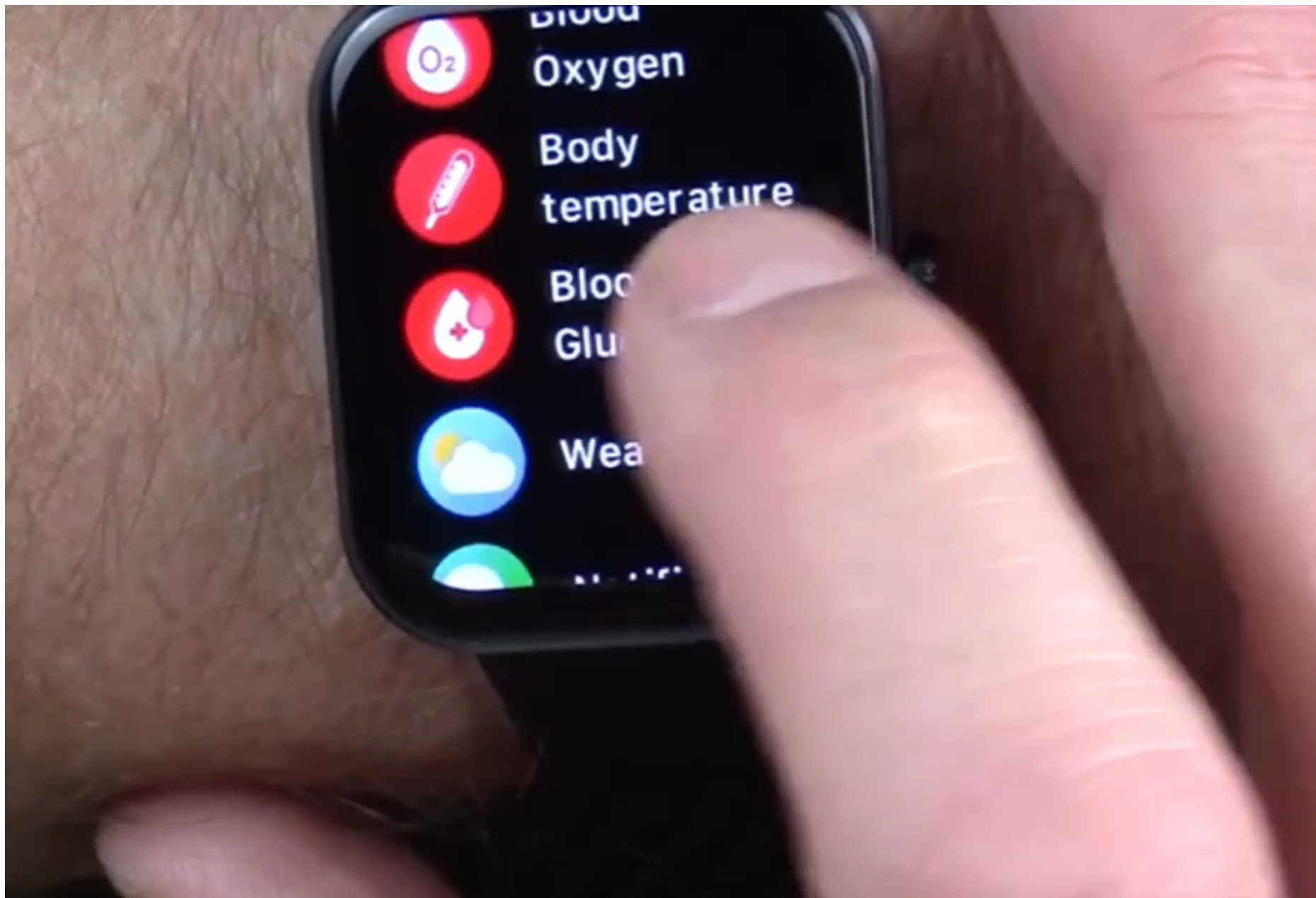
Your Glucose Levels - All By Looking At Your Wrist.

Monitor your **glucose levels in real-time, painlessly & precisely**, and make sure you **never miss any fluctuations**.

Learn how meals, exercise, and insulin cause your glucose levels to change throughout the day.

★**Check your sugar levels discreetly by simply glancing at the watch**





Results In Seconds - Without Fingersticks

Using chip technology, our measurement process called **optical absorption spectroscopy**, illuminates your blood vessels while measuring the amount of light reflected.

Our **advanced algorithms** then calculate the results and give you a report of your health.

★ **Get remarkably accurate results without having to prick your skin.**





The Science Behind...

Using advanced sensor technology, our smartwatch **measures glucose levels through your skin's natural moisture**, eliminating the need for painful and uncomfortable traditional glucose meters.

GlucoseMonitor™ is equipped with special sensors that **use light to scan the blood vessels in your wrist**. These sensors can detect changes in the amount of light that is reflected back, providing an accurate reading of the glucose levels in your blood.

★ **Check your glucose levels in real-time without the pain and hassle of traditional methods**



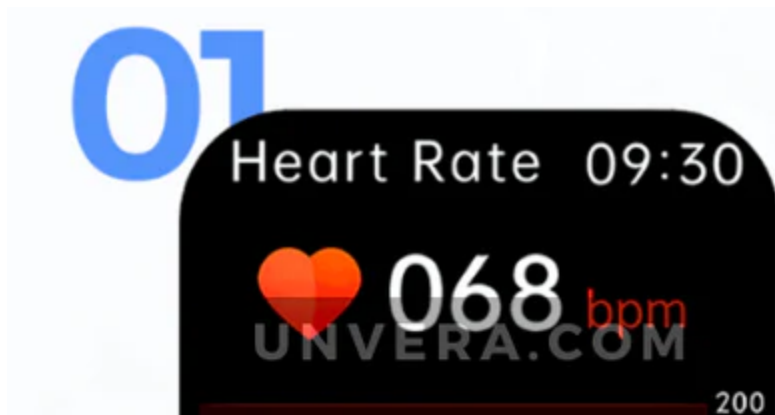


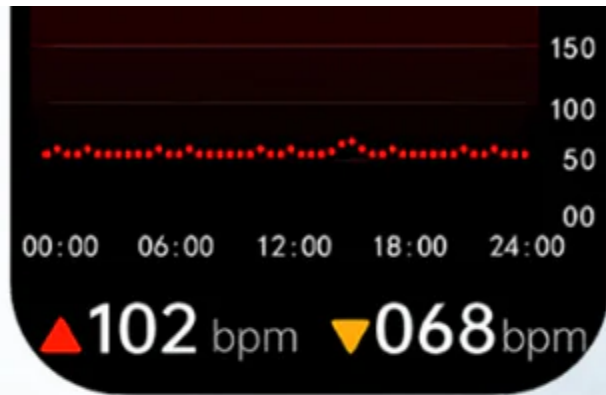


24-Hour-A-Day Health Checkup

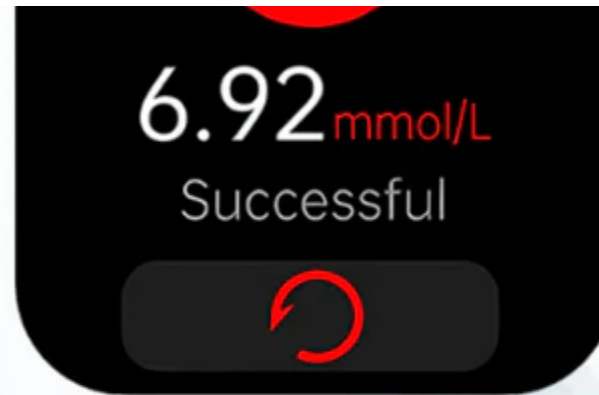
A **personal health assistant** on your wrist that can give you **real-time insights** into your health status...

- ✓ **heart rate & sleep monitoring**
- ✓ **blood glucose & pressure monitoring**
- ✓ **blood oxygen & body temperature monitoring**
- ✓ *and many more*

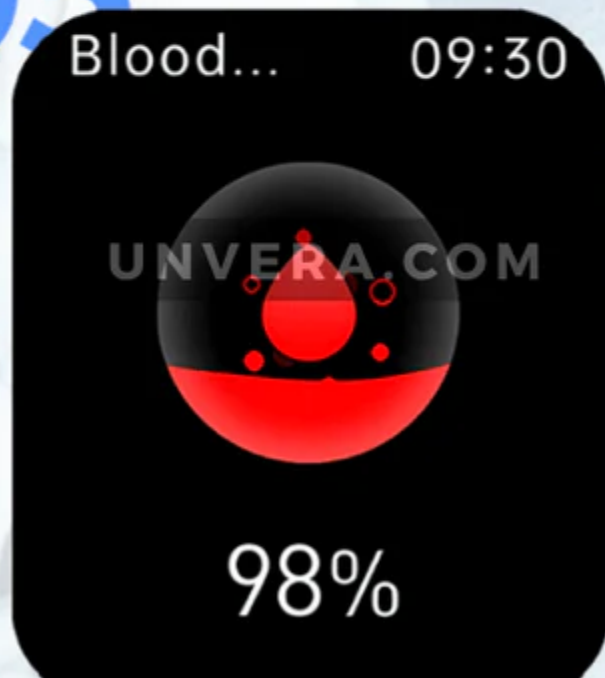




REAL-TIME HEART RATE MONITOR



BLOOD SUGAR TESTING

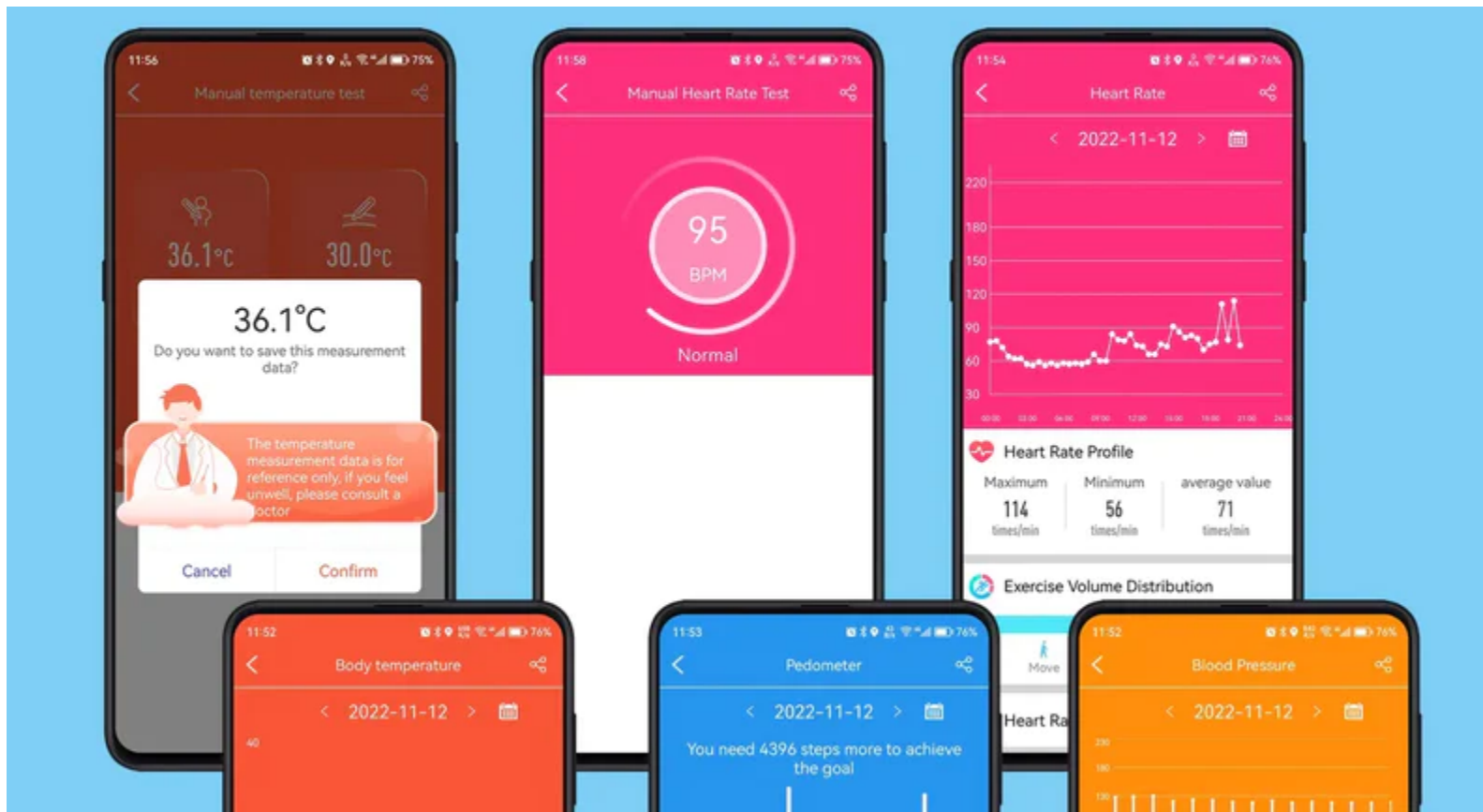


**BLOOD OXYGEN
MONITOR**

**BLOOD PRESSURE
MONITOR**

Even more in-depth analysis with our iPhone & Android App

You will be able to explore your history to identify patterns and better understand your diabetes, in order to share your results with family or doctors.





+100s of features you'll love



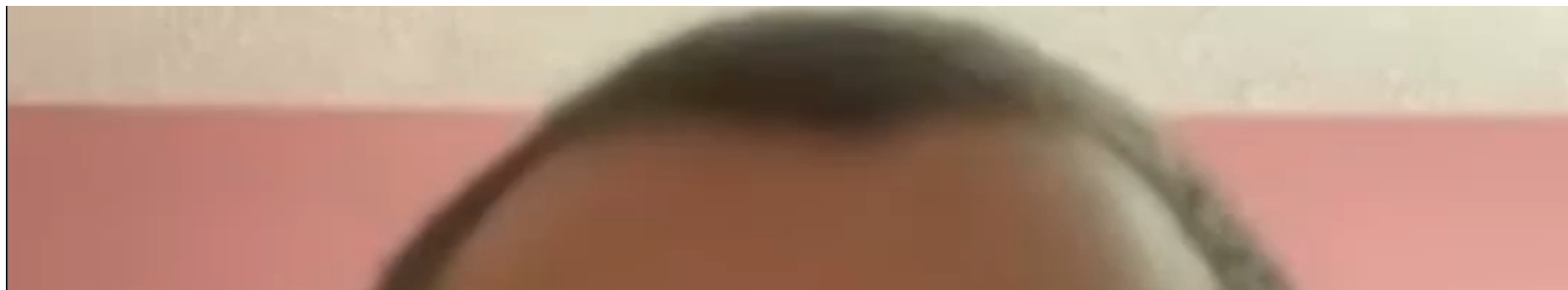


Proven By Independent Scientific Research

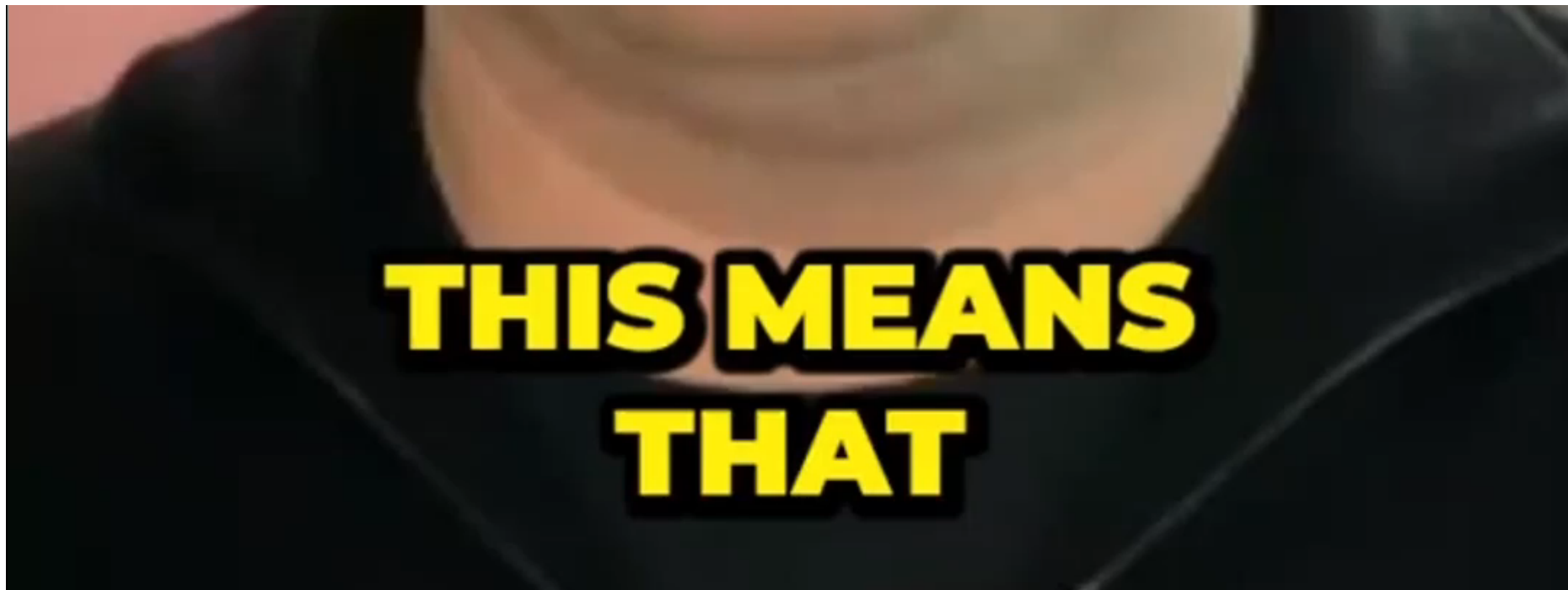
GlucoseMonitor™ uses advanced algorithms to analyze the data it collects and gives you **a comprehensive report of your glucose level, helping you manage your diabetes with ease.**

With its advanced sensor technology, real-time monitoring, and comprehensive reporting, it's **the perfect tool for anyone looking to take control of their diabetes and live their best life.**

★ **Our comprehensive reporting helps you take proactive steps to manage your health and wellness.**







FREE & FAST Shipping On All U.S Orders! 🇺🇸

30-Day Money Back Guarantee

Active Customer Care Team

Shop With Confidence

Click below to read more about our policies!

[Shipping](#)

[Returns & Refund](#)

[Cancellation](#)

Customer Reviews



Based on 26 reviews

Pictures First ▼

S



S.G.

The real-time blood glucose monitoring provided by this smartwatch has been a game-changer for me. It has allowed me to catch fluctuations in my glucose levels early on, helping me to avoid potentially dangerous situations. I feel more in control of my diabetes than ever before.

L



Louvenia Schneider

Logistics is very fast, very good-looking. In short, quality exceeds price

N

**Narciso Kreiger**

Color and propaganda color is the same, you can switch different dial, function is very practical, use feel full marks

P

**Peggie Hettinger**

Clear picture, simple operation, very beautiful

G

**Giovanni Mueller**

After testing, the watch lasts about 15 days, more functions, the physiological indicators are relatively in line with the physical indicators, as a test of health is a good choice.

Load More



We spend hours in searching the web looking for the newest & most unique products on the market with a level of service that is unmatched!



Our Policies

[Shipping Policy](#)

[Returns & Refund Policy](#)

[Cancellation Policy](#)

[Privacy Policy](#)

[Terms of Service](#)

[Billing Terms and Conditions](#)

Useful links

[About Us](#)

[Contact Us](#)

[Track Your Order](#)

[Frequently Asked Questions](#)

Get In Touch

Need help or have a question? Or simply want to reach out to us? Contact us below:

[Contact Us Form \(Click Here\)](#)

Email: contact@yerime.com

Phone: +1 (206) 875-3990

Address: 539 W Commerce St #2861 Dallas, TX 75208, USA

Service Hours : From 9 am to 5 pm (CDT)

Business Days : Monday to Friday



© 2023, Yerime