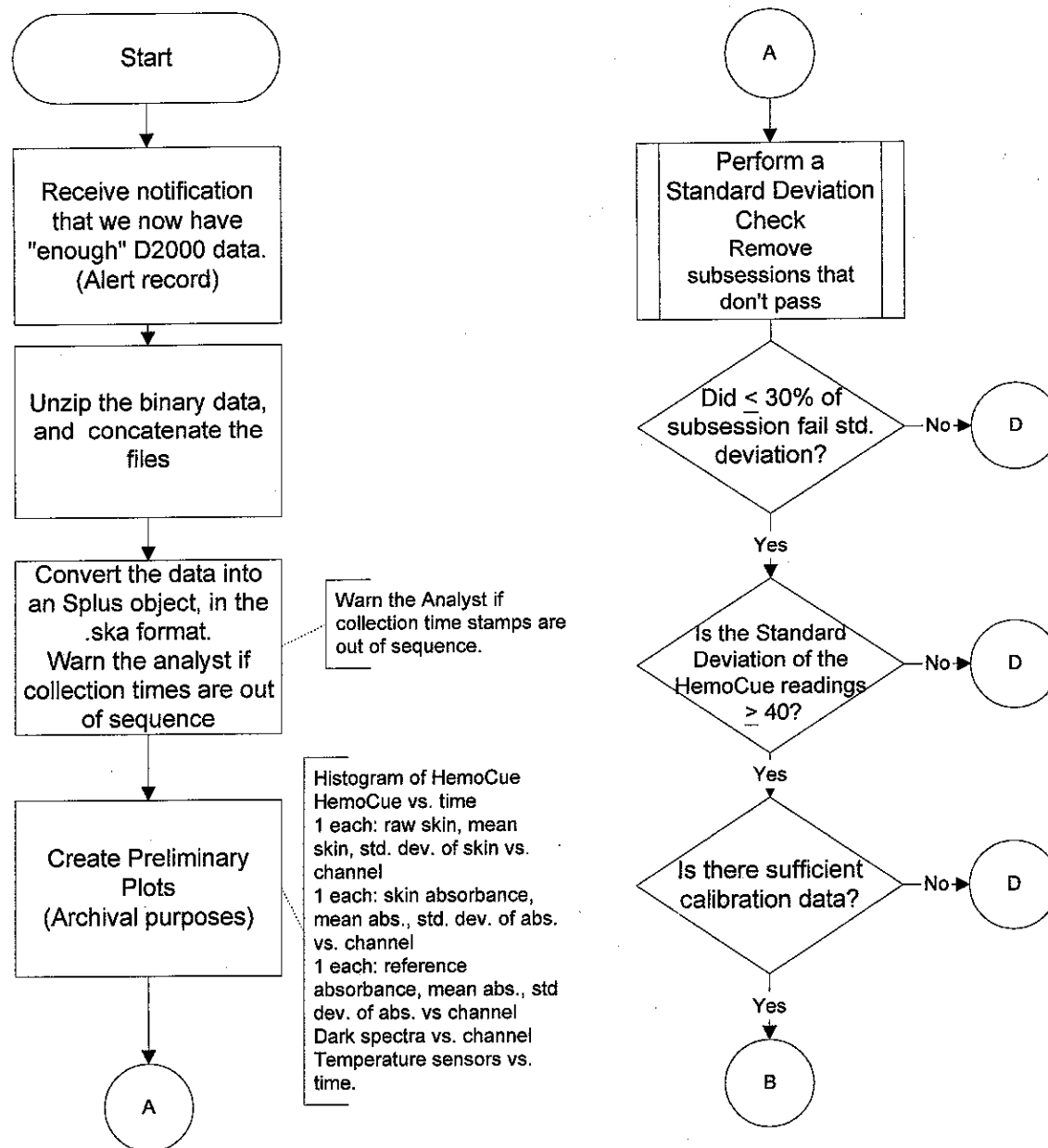


## Patient Data Analysis Calibration Procedure

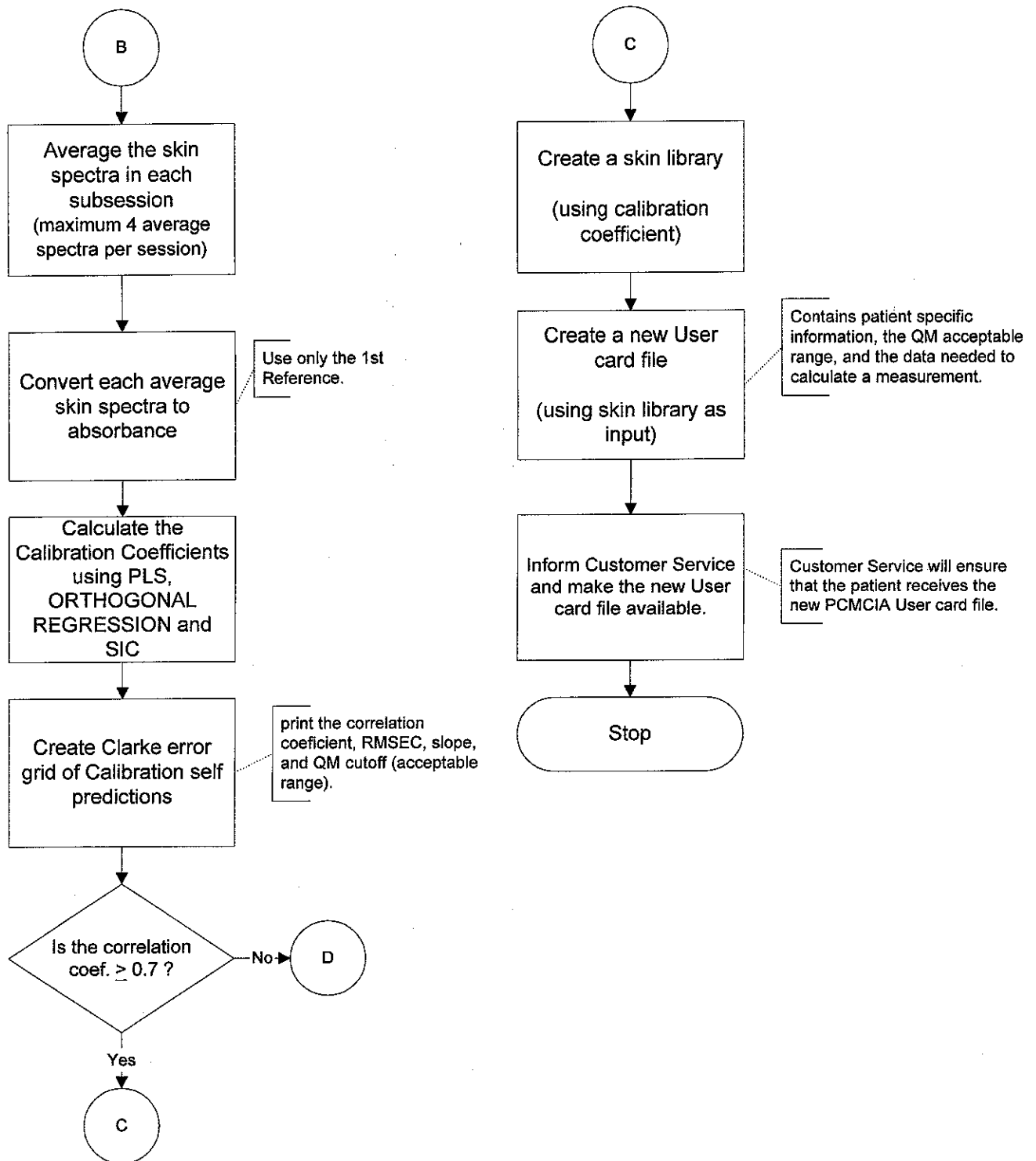
The patient was issued a D2000 with a user card and a HemoCue to collect Calibration data. Calibration data was sent to Patient Data Analysis. When enough data for processing has been collected, an Alert record is generated to alert the Analysts to this fact.

Items appearing in a "predefined process" box are defined in the D2000 Algorithm Specification.



Patient Data Analysis Calibration Procedure  
(continued)

Page 2

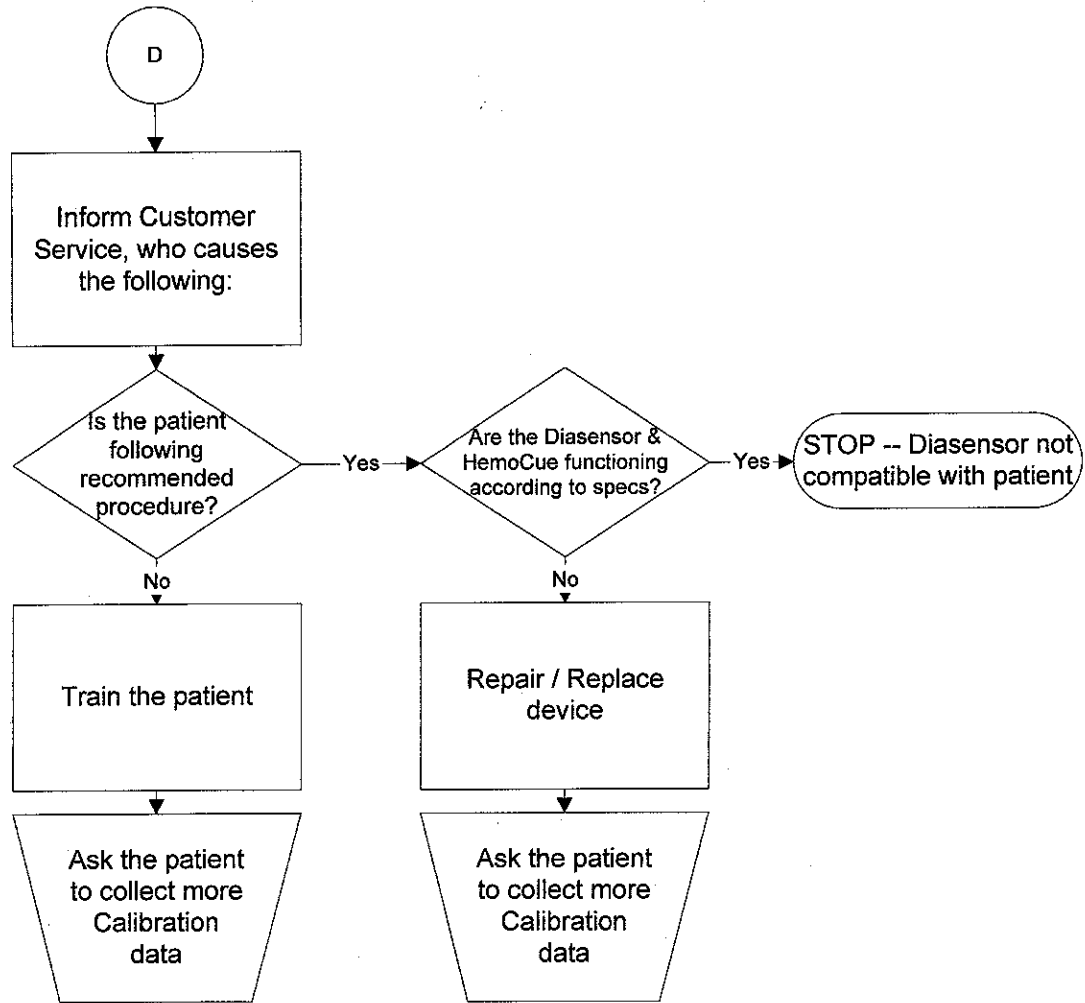


Date: 11/23/99 11:30am

**Confidential Biocontrol Technology, Inc.**

Patient Data Analysis Calibration Procedure  
(continued)

Page 3



Date: 11/23/99 11:30am

**Confidential Biocontrol Technology, Inc.**